

052598

LARAMIE COUNTY
CHEYENNE, WYO.

CERTIFIED LAND CORNER RECORDATION

88 DEC 23 AM 9 09

DESCRIPTION OF CORNER EVIDENCE FOUND, AND ORIGINAL RECORD (if known)

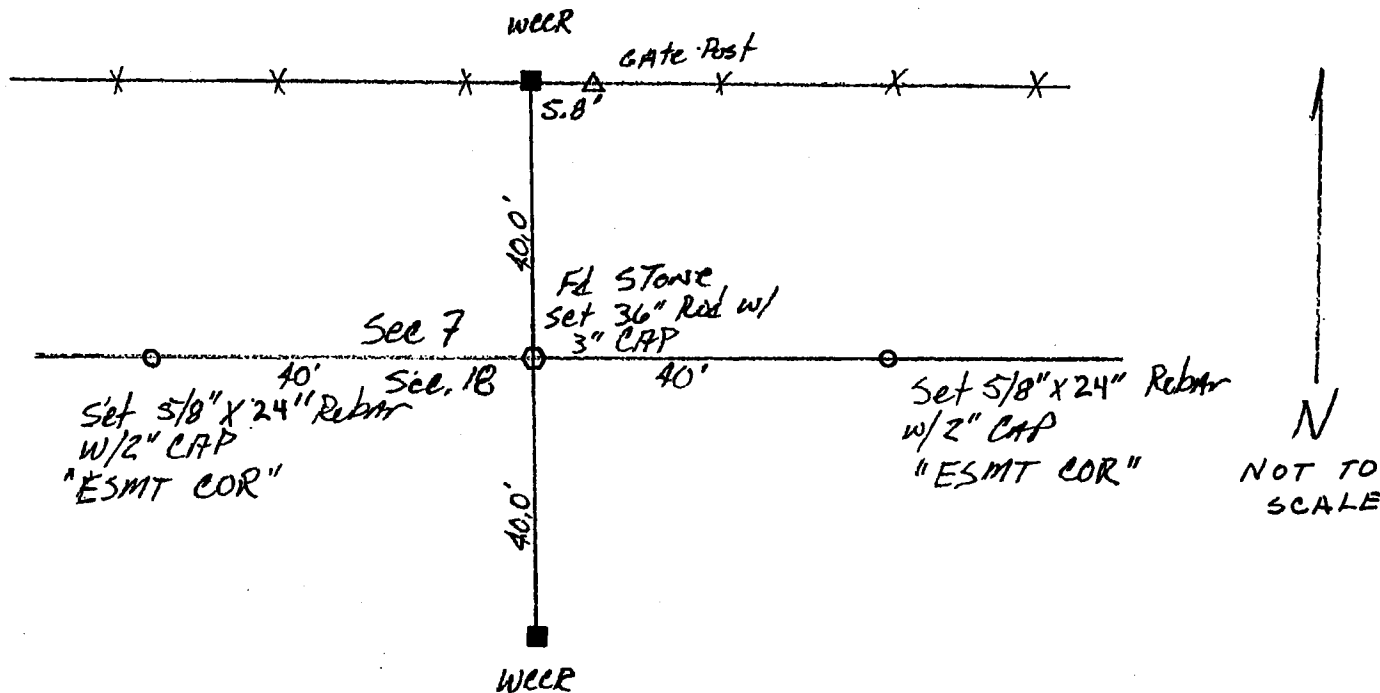
Sec. 7 1/4
T 13N, R 64W

Found: Pink granite stone, 8" x 10" with top about 12" below ground.
Accessories found - See notes on back.
GLO: Set a granite boulder 17" x 9" x 7" for quarter section corner.

DESCRIPTION OF MONUMENT AND ACCESSORIES ESTABLISHED TO PERPETUATE THE ORIGINAL LOCATION OF THIS CORNER:

Set: * Set driveable aluminum monument, 2" i.d., 36" long, with 3" aluminum cap. Left stone as memorial. Set easement points, 5/8" x 24" rebar with 2" aluminum cap, as shown. See Map of Survey filed with Laramie County Clerk for dimensions to adjacent corners.

SKETCH; WITH COURSE AND DISTANCE TO ADJACENT CORNER IF DETERMINED IN THIS SURVEY. (May Sketch or Paste Reproduction on Reverse Side.)



I, BECKY J. BRAMAN

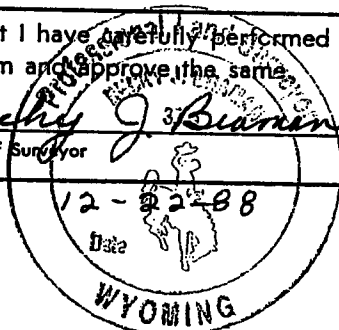
certify that I have carefully performed or reviewed the work

done on the diagrammed corner as reported on this recordation form and approve the same.
* DUE TO ROAD CONSTRUCTION, DRIVEABLE MON. HAS NOT BEEN SET YET. IT WILL BE SET BY 6-30-89.

Becky J. Braman
Signature of Surveyor

P15 3881
Registration No.

STATE OF WYOMING,
Office of Clerk and Recorder,
County of LARAMIE



This "corner record" was filed for record on the _____ day of _____, 19____, was noted on the cross-index plat and is assigned page No. _____, in book No. _____

County Official	
Cross Index No. <u>53</u>	T. <u>13N</u> R. <u>64W 6th Mer.</u>
_____	T. _____ R. _____ Mer.
_____	T. _____ R. _____ Mer.
_____	T. _____ R. _____ Mer.
_____	T. _____ R. _____ Mer.
_____	T. _____ R. _____ Mer.
_____	T. _____ R. _____ Mer.

Witness corner - Gray, granite stone lying north, in fence line, with chiseled "WCCR" on south face.

Witness corner - White, pink-streaked quartz stone lying south, with chiseled "WCCR" on top.

Note: Laramie County Engineer's office has no specific notes on the witnessing of this road, but other notes, especially the Chalk Bluffs Road notes, show corners set 40 feet to the East and West of North-South road and set at 56.4 feet diagonally from intersections, usually NE and NW.